

Users' guide for bananas



MOVENTO[®]

ENERGY

Controlling banana weevil borers and rust thrips

Movement[®] Energy Insecticide is an innovative combination of two active ingredients that is easy to apply and can control banana weevil borer larvae and rust thrips.

Movement Energy contains imidacloprid, the active ingredient in Confidor[®] Guard, providing the same powerful control of banana weevil borer larvae and rust thrips.

Its extra active ingredient, spirotetramat, helps to strengthen control of rust thrips and will also (when it is applied as directed) reduce the likelihood of spider mite populations to flare up after application of imidacloprid.

In many trials, banana plants treated with Movement Energy have also shown additional vigour and growth over those treated with Confidor Guard, due to its improved pest control.

Integrated management of rust thrips

Bell injection, bagging, and post-bagging application of other insecticides should be maintained as normal for best management of rust thrips and other bunch pests.



MOVENTO ENERGY IN BANANAS AT A GLANCE

Pests	Banana weevil borer (<i>Cosmopolites sordidus</i>) Rust thrips (<i>Chaetanaphothrips signipennis</i>)
Rate	7.5 mL of product per plant Apply neat or with added water to a total volume of 10 mL/plant
Adjuvant	Organosilicone adjuvant can be added at 10 mL/10 L to enable smoother operation of injection guns with no adverse effects on plants
Follower size	Followers should be at least 1 m high (to throat) and preferably not more than 1.5 m The ideal height is about 1.2 m
Timing restrictions	Treat each follower once only Ratoons – within 3 months after harvest of mother plant Plant – not later than 3 months before expected bunching
Compatibility	Compatible with Maxx [®]
Withholding period	Not required when used as directed
Active ingredients	Imidacloprid (Group 4A) Spirotetramat (Group 23)
Formulation	Suspension concentrate (SC) containing 120 g/L imidacloprid plus 120 g/L spirotetramat

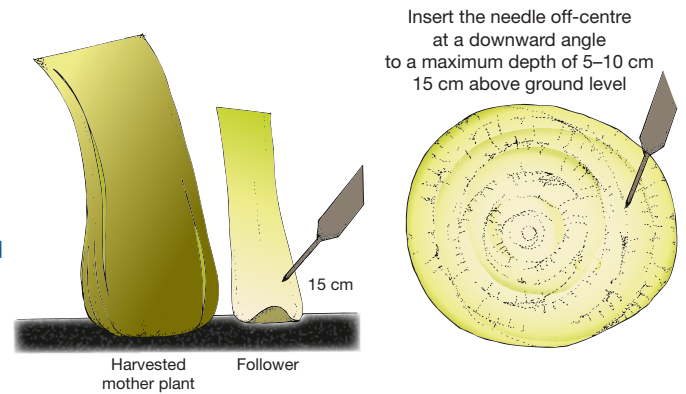


GETTING THE BEST OUT OF MOVENTO ENERGY

APPLICATION METHOD

Movento Energy should be injected into the base of the unbunched main follower pseudostem as shown, ideally when the follower is about 1.2 m high at a height of about 15 cm above ground level.

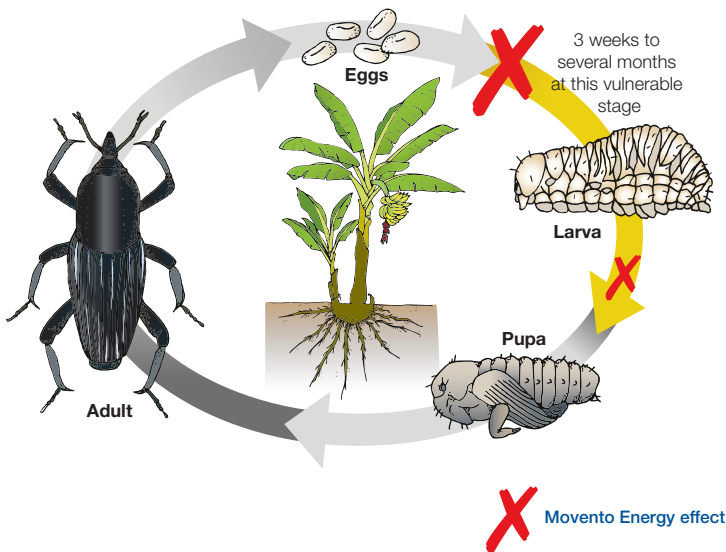
The needle must be off-centre to avoid damaging the centre of the stem. Injecting into the centre of the plant could result in plant death.



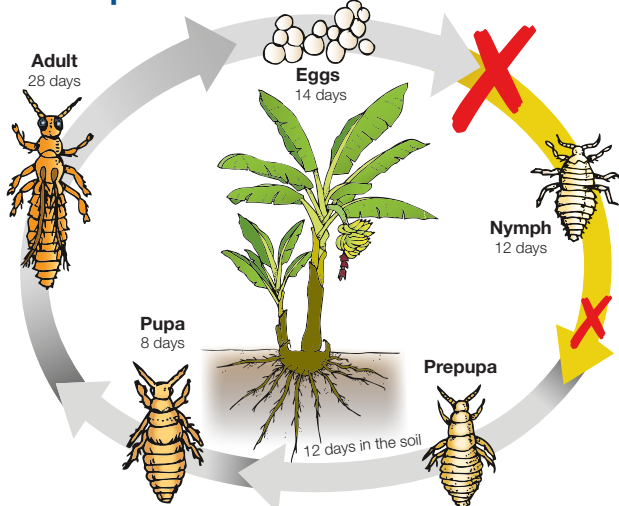
TARGET PEST TIMING

Movento Energy controls actively feeding **larvae of banana weevil borer** in the corm, and controls younger **nymph stages of rust thrips**. Activity against adult stages of both target pests is minimal.

Banana weevil borer



Rust thrips



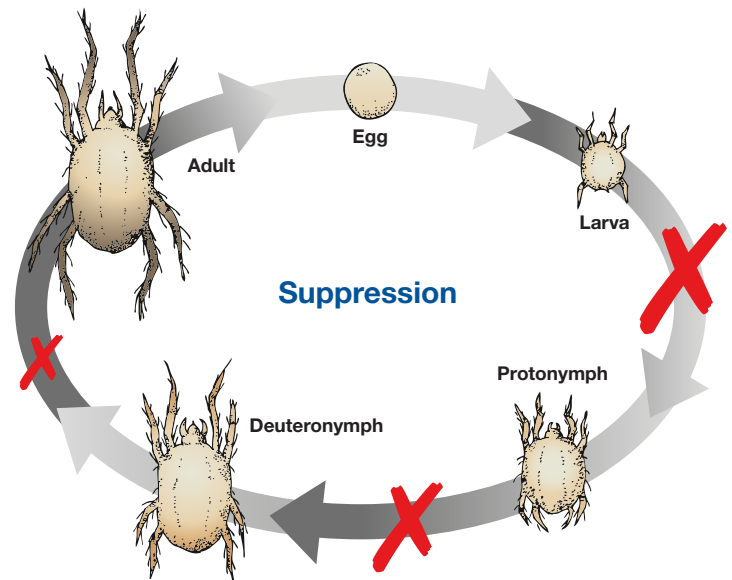
MITE MANAGEMENT

Adult mites should be completely absent or only present in very low numbers before applying Movento Energy. To achieve this, consider applying Movento Energy:

1. at a time of year when mites are in low numbers,
2. when the weather is NOT conducive to mites, or
3. to younger followers before mites invade.
(In general, bigger followers have more mites.)

Reduce adult mite numbers with miticide spray(s) either before or within two weeks of applying Movento Energy. The entire mite lifecycle only takes a week to twelve days.

Spider mites



Always consult the product label for detailed information. The information and recommendations set out in this brochure are based on tests and data believed to be reliable at the time of publication. Results may vary, as the use and application of the products is beyond our control and may be subject to climatic, geographical or biological variables, and/or developed resistance. Any product referred to in this brochure must be used strictly as directed, and in accordance with all instructions appearing on the label for that product and in other applicable reference material. So far as it is lawfully able to do so, Bayer CropScience Pty Ltd accepts no liability or responsibility for loss or damage arising from failure to follow such directions and instructions.