



EMESTO[®]
PRIME

Emesto[®] Prime Crop Guide.

Emesto Prime is an in-furrow fungicide that offers outstanding efficacy against soil borne black scurf (*Rhizoctonia solani*). Emesto Prime will help to maximise profits for potato growers as it delivers better quality potatoes.

As a Group 7 fungicide Emesto Prime offers growers an alternate mode of action for the control of rhizoctonia infections which cause black scurf, stem and stolon canker of tubers.

This alternative mode of action can be rotated with existing fungicide groups to limit the development of resistant disease populations and decrease selection pressures on currently registered fungicides.



Root lesions caused by black scurf on potato roots

At a glance

Disease	Soil borne black scurf or rhizoctonia root rot – (<i>Rhizoctonia solani</i>)
Active ingredient	Penflufen (Fungicide Group 7)
Product rate	4 mL/ 100 m of row.
Water rate	Apply Emesto® Prime in 1–3 L of water/100 m of row. Ensure the water volume applied does not wash off any previously applied seed treatments.
Application	Emesto Prime can be applied with existing in-furrow spray application equipment.
Compatibility	Emesto Prime is compatible with Serenade® Prime, Confidor® Guard & Amistar®
Withholding period	Not required when used as directed.
Pack size	5 L

The advantages of Emesto Prime

Alternate mode of action for rhizoctonia control

– can be rotated with other fungicide groups to avoid build-up of resistant disease populations.

Outstanding efficacy – Emesto Prime provides control of soil borne black scurf.

Minimal translocation – Keeps the product in and around the roots where it is most effective against soil borne black scurf.

Application

Emesto Prime is applied as an in-furrow application at planting at a rate of 4 mL/100 m row in 1–3 L of water/100 m row. Ensure the water volume applied does not wash off any previously applied seed treatments.

Mount the spray nozzle so the spray is directed into the furrow at the seed piece as a 15–20 cm band to apply product just before the seed piece is covered. Alternatively use a 2-nozzle system per row spraying the furrow prior to seed drop and after it has dropped just prior to covering.

To reduce the potential for seed piece breakdown, strictly follow label instructions regarding water volume and follow industry recommended seed piece handling and planting practices.



Black scurf symptoms on potato skin

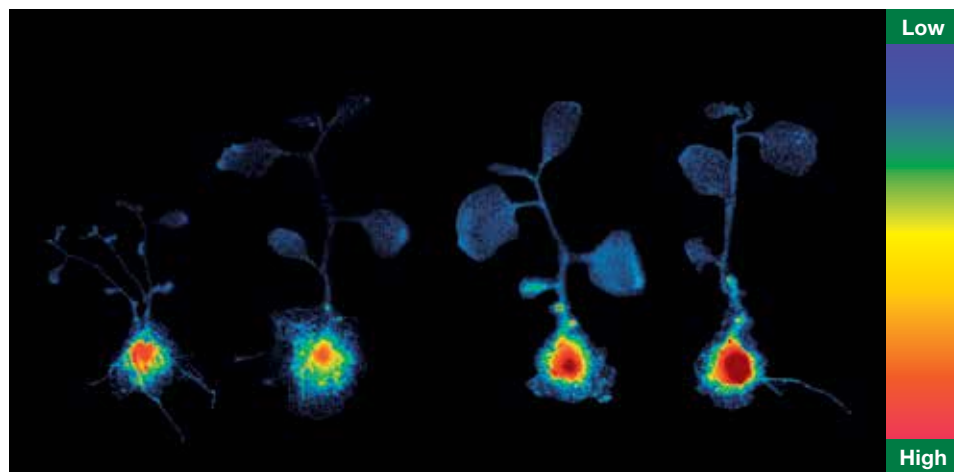


EMESTO[®]
PRIME



How does it work?

Emesto Prime has minimal translocation of penflufen from the roots to the foliage. This means that the product remains in and around the treatment zone, providing protection to young shoots and stolons from soil borne black scurf.



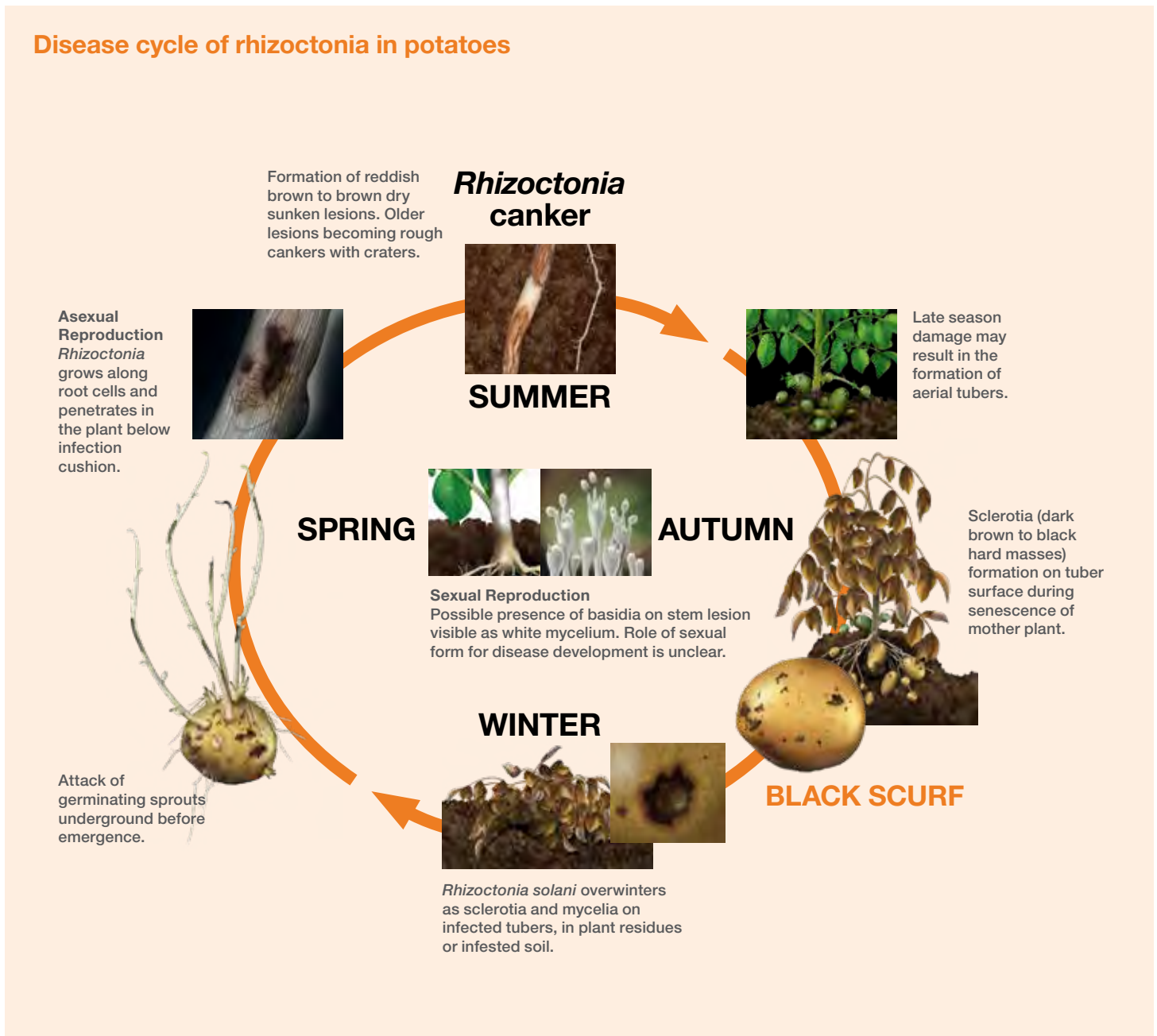
Distribution after application on microtubers 15 days after sowing

Mode of action

Succinate DeHydrogenase Inhibitor (SDHI) – succinate dehydrogenase is one of the enzymes that is active in the respiratory chain in the mitochondria of fungi. The respiratory chain is responsible for the production of chemical energy (ATP) in the fungal cell. Emesto Prime inhibits the succinate dehydrogenase enzyme, stopping energy production from occurring in the fungal cell.

Soil borne black scurf

Cool and wet conditions after planting favour the development of soil borne black scurf. *Rhizoctonia* can survive on organic matter in the soil and attack sprouts before they emerge.



Symptoms of soil borne black scurf include stem lesions, reduced plant mass, smaller cupped leaves, early flowering, aerial tubers and in severe cases prevention of emergence.

Want more information?

Visit www.crop.bayer.com.au or contact your advisor.

Always consult the product label for detailed information. The information and recommendations set out in this brochure are based on tests and data believed to be reliable at the time of publication. Results may vary, as the use and application of the products is beyond our control and may be subject to climatic, geographical or biological variables, and/ or developed resistance. Any product referred to in this brochure must be used strictly as directed, and in accordance with all instructions appearing on the label for that product and in other applicable reference material. So far as it is lawfully able to do so, Bayer CropScience Pty Ltd accepts no liability or responsibility for loss or damage arising from failure to follow such directions and instructions. Bayer CropScience Pty Ltd ABN 87 000 226 022

Level 1, 8 Redfern Road, Hawthorn East, Victoria 3123. Technical enquiries: 1800 804 479 enquiries.australia@bayer.com. Ernesto® is a Registered Trademark of the Bayer Group. © 2020 Bayer Group BH00209

